



RECP #: 752744

RECORDED 5/8/2019 AT 1:15 PM BK# 2620 PG# 1786  
Debra K. Lee, CLERK OF LARAMIE COUNTY, WY PAGE 1 OF 1

# STATE OF WYOMING CORNER RECORD

(In compliance with the CORNER PERPETUATION AND FILING ACT, Wyoming Statutes, 1997 Section 33-29-140, et. seq., and the Rules and Regulations of the Board of Registrations for Professional Engineers and Professional Land Surveyors)

## WEST QUARTER CORNER SECTION 34, T. 18 N., R. 62 W., 6TH P.M., LARAMIE COUNTY, WYOMING

GLO: SET A SANDSTONE 16X14X4, 10IN. DEEP, MARKED 1/4 ON W. SIDE FOR 1/4 SEC. COR.

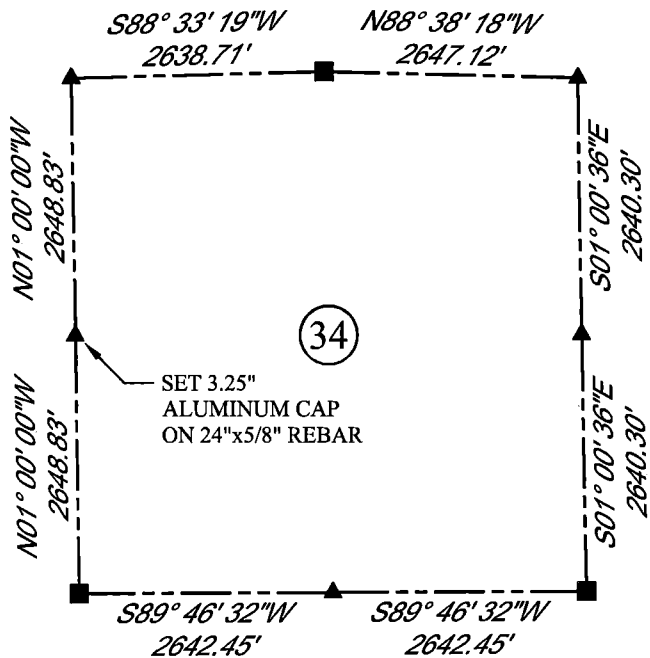
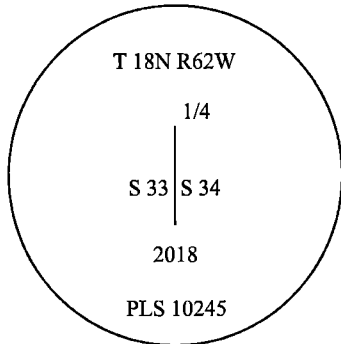
FOUND: NOTHING. SET ALUMINUM CAP AT PROPORTIONATE (SINGLE) DISTANCE.



SCALE: NONE

NORTH DETERMINED BY  
G.P.S OBSERVATIONS

SET 3.25" ALUMINUM CAP ON REBAR,  
5IN ABOVE SURFACE, STAMPED AS  
SHOWN. CORNER IS SET ON EAST  
SIDE OF NORTH AND SOUTH FENCE  
LINE, SET 2 MAG NAILS IN FENCE  
POSTS +-19' NORTHWESTERLY AND +-  
17' SOUTHWESTERLY.



### LEGEND:

- FOUND BLM CAP
- FOUND USFS CAP
- FOUND STONE
- FOUND PRIVATE MONUMENT
- ◇ CALCULATED POSITION
- ▲ SET MONUMENT (LS10245)
- SECTION LINE

DATE OF FIELD WORK: 10/2/2018 OFFICE REFERENCE: MERIDEN

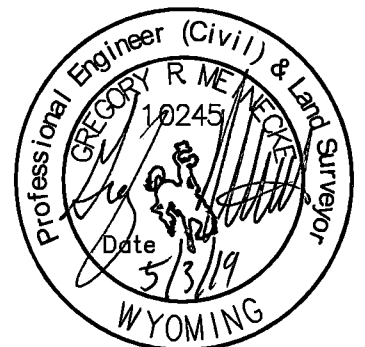
### CROSS INDEX DIAGRAM

	1	2	3	4	5	6	7	8	9	10	11	12	13	14	15	16	17	18	19	20	21	22	23	24	25	
A																										
B																										
C			6			5				4					3					2					1	
D																										
E																										
F																										
G			7			8				9					10					11					12	
H																										
J																										
K																										
L			18			17				16					15					14					13	
M																										
N																										
O																										
P			19			20				21					22					23					24	
Q																										
R																										
S																										
T			30			29				28					27					26					25	
U																										
V																										
W																										
X			31			32				33					34					35					36	
Y																										
Z																										

WOOD  
2615 AVIATION DRIVE  
SHERIDAN, WY 82801  
PH: 307-675-6400

# wood.

THIS CORNER RECORD WAS  
PREPARED BY ME OR UNDER  
MY DIRECTION AND  
SUPERVISION,  
SEAL AND SIGNATURE



CORNER NAME: WEST QUARTER SECTION: 34 T. 18 N., R. 62 W. ; 6TH P.M. CROSS-INDEX # X-13  
SBRPELS/PLSW: MARCH 1994; PLSW JANUARY 1998